

SITE DESCRIPTION

NAME: Anderson Site

LOCATION: Site is approximately 1½ miles North of the City of Conway, SC along S.C. Road 65 near the intersection of U.S. Highway 701 North and S.C. Road 65

SIZE: .. Acres±

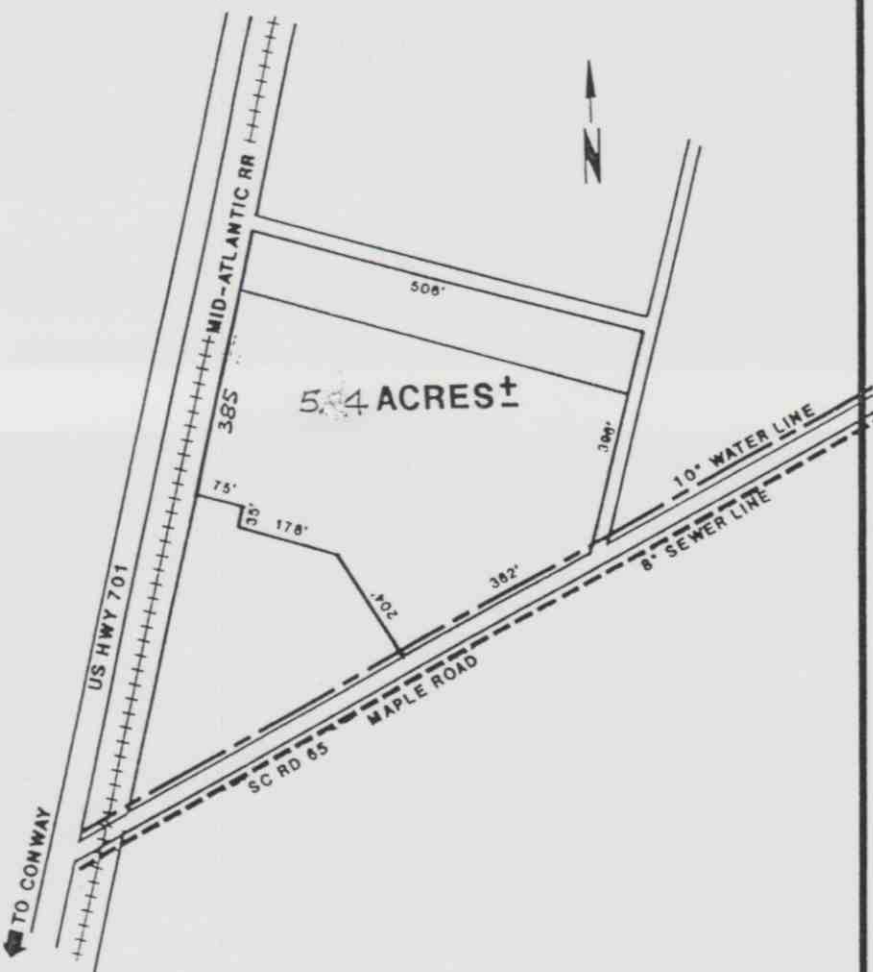
TOPOGRAPHY: Flat

SOIL TYPE: Sandy Clay to Sandy Clay Loams

TAX DISTRICT: Horry County

ZONING: Light Industrial

FIRE PROTECTION: Horry County



UTILITIES

WATER SUPPLIER: City of Conway, 10" line along Maple Road

WASTEWATER DISPOSAL: City of Conway, 8" line

GAS: SCE&G Co., 4" line at site

ELECTRICITY: Santee Cooper